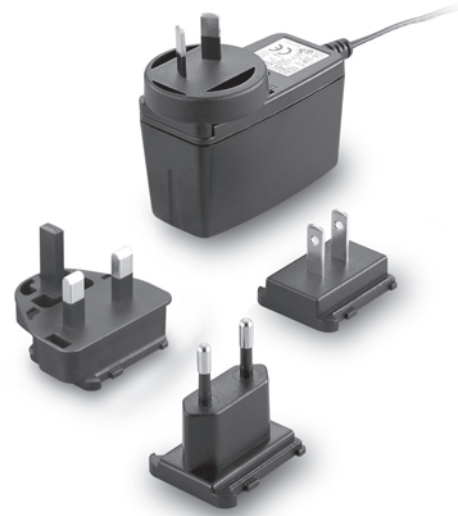


TRG10R

S E R I E S

10W SWITCHING ADAPTER



Features

- Universal Input: 90-264Vac
- Interchangeable AC Plugs
- EMI Meets EN55022 Class "B" and CISPR/FCC Class B
- Continuous Short Circuit Protection
- Meet CEC & ErP Level V (Output cable length $\leq 1800\text{mm}$)
- Over Voltage Protection
- Provide PSE Mark

Ordering information

TRG10RXXX - XX	X	XX
Model No.	DC Plug Type * Please see Page215 for more detailed descriptions	DC Cable Length and Type 01 : 720mm 02 : 1220mm 03 : 1800mm 11 : 720mm with Ferrite Core 12 : 1220mm with Ferrite Core 13 : 1800mm with Ferrite Core * 18AWG / UL1185
	OVP E: With OVP Option	

MODEL	OUTPUT VOLTAGE	MAX. LOAD	MIN. LOAD	RIPPLE & NOISE	VOLTAGE ACCURACY	LINE REGULATION	LOAD REGULATION	%EFF. (Typ.)
TRG10R050	5V	1600mA	0 A	50mV	± 2%	± 1%	± 4%	75%
TRG10R060	6V	1500mA	0 A	1%	± 2%	± 1%	± 3%	75%
TRG10R075	7.5V	1200mA	0 A	1%	± 2%	± 1%	± 3%	75%
TRG10R090	9V	1100mA	0 A	1%	± 2%	± 1%	± 2%	76%
TRG10R120	12V	850mA	0 A	1%	± 2%	± 1%	± 2%	76%
TRG10R136	13.6V	750mA	0 A	1%	± 2%	± 1%	± 2%	76%
TRG10R150	15V	700mA	0 A	1%	± 2%	± 1%	± 2%	77%
TRG10R180	18V	550mA	0 A	1%	± 2%	± 1%	± 2%	77%
TRG10R240	24V	400mA	0 A	1%	±2%	± 1%	± 2%	77%

Specifications

INPUT SPECIFICATIONS:

Voltage	90-264Vac
Frequency	47 to 63Hz
Input Current	0.4A max.
Inrush Current	40A max. @240Vac
Conducted EMI	CISPR/FCC Class B
Leakage Current	0.25mA max.

OUTPUT SPECIFICATIONS:

Holdup Time	10ms typ. @115Vac
Short Circuit Protection	Continuous(Auto Recovery)
Over Voltage Protection	TVS Component to Clamp
Temperature Coefficient	±0.05%/°C

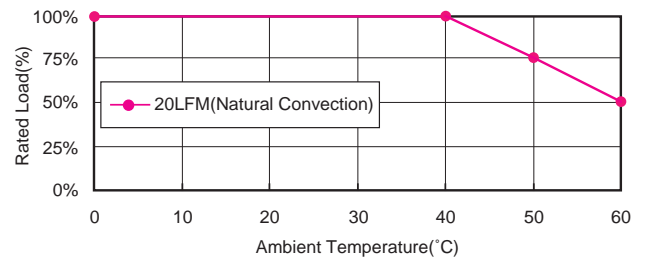
GENERAL SPECIFICATIONS:

Isolation	Input to output = 4,242VDC
Operating Temperature	0 ~ 60°C (see derating curve)
Storage Temperature	-20 ~ 85°C
Humidity	93% RH max. Non condensing
Cooling	Natural Convection
Switching Frequency	66KHz Typical
MTBF	MIL-HDBK-217F, GB, at 25°C/115VAC 200K hrs min.
Altitude	2000m
Dimensions	2.858x1.823x1.402Inches (72.6x46.3x35.6mm)
Weight	130g(0.29 Pounds)

SAFETY AND EMC:

Emission and Immunity	EN55022 Class B, FCC Part15 Class B EN61000-6-3, EN61000-3-2, EN61000-3-3 EN55024, EN61204-3, EN61000-6-1
Safety	IEC60950-1, EN60950-1, UL60950-1

TRG10R Series Derating Curve



NOTE:

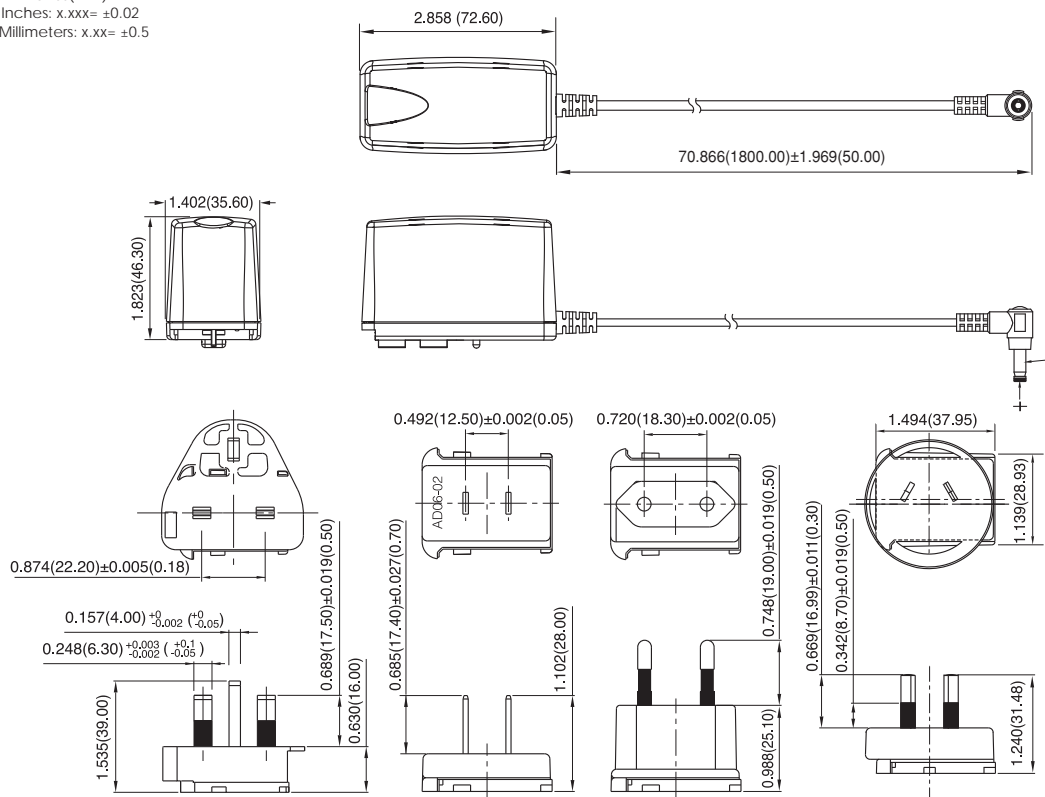
- Voltage setpoint at 60% full load.
- Add a 0.1µF ceramic capacitor and a 10µF E.L. capacitor to output for Ripple & Noise measurement @20MHz BW.
- Line regulation measured from 100Vac to 240Vac, full load.
- Load regulation measured from 60% to full load and from 60% to 20% load (60% +/- 40% load)
- *Various TR Series adapters are PSE certified. PSE certification alone is not sufficient for importation into Japan. A valid PSE mark must contain the name of the importer as shown in the example below. If PSE mark is required, the name of the registered importer must be supplied to Cincon on order placement. Product labels will not contain PSE mark if importer name is not supplied. Consult factory or local representative for details*



TRG10R

Mechanical Specification

All Dimensions In Inches(mm)
Tolerance Inches: x.xxx= ±0.02
Millimeters: x.xx= ±0.5



Typical at 25°C, nominal line and 75% load, unless otherwise Specified