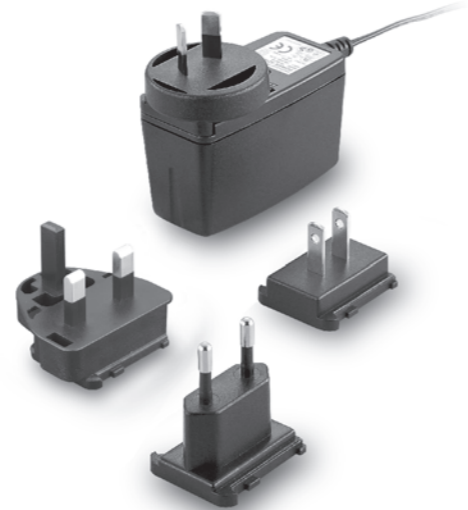


# TRG10R

S E R I E S

## 10W SWITCHING ADAPTER



### Features

- Universal Input Range 90-264VAC
- Interchangeable AC Plugs
- Meets EN55022 Class B and CISPR/FCC Class B, Conducted
- Continuous Short Circuit Protection
- Over Current Protection
- CEC Level IV Compliant (Output Cable Length  $\leq$  1800mm)

### Ordering information

TRG10RXX	XX	X	XX
Model No.	DC Plug Type		DC Cable Length and Type
	* Please see Page235 for more detailed descriptions	E : With OVP	01 : 720mm 02 : 1200mm 03 : 1800mm 11 : 720mm with Ferrite Core 12 : 1200mm with Ferrite Core 13 : 1800mm with Ferrite Core * 20AWG / UL2468

MODEL	OUTPUT VOLTAGE	MAX. LOAD	MIN. LOAD	RIPPLE & NOISE	VOLTAGE ACCURACY	LINE REGULATION	LOAD REGULATION	SWITCHING FREQUENCY	% EFF.
TRG10R050	5V	1600mA	0 A	50mV	$\pm 2\%$	$\pm 1\%$	$\pm 4\%$	66KHz Typ.	73% Typ.
TRG10R060	6V	1500mA	0 A	1%	$\pm 2\%$	$\pm 1\%$	$\pm 3\%$	66KHz Typ.	73% Typ.
TRG10R075	7.5V	1200mA	0 A	1%	$\pm 2\%$	$\pm 1\%$	$\pm 3\%$	66KHz Typ.	73% Typ.
TRG10R090	9V	1100mA	0 A	1%	$\pm 2\%$	$\pm 1\%$	$\pm 2\%$	66KHz Typ.	74% Typ.
TRG10R120	12V	850mA	0 A	1%	$\pm 2\%$	$\pm 1\%$	$\pm 2\%$	66KHz Typ.	74% Typ.
TRG10R136	13.6V	750mA	0 A	1%	$\pm 2\%$	$\pm 1\%$	$\pm 2\%$	66KHz Typ.	74% Typ.
TRG10R150	15V	700mA	0 A	1%	$\pm 2\%$	$\pm 1\%$	$\pm 2\%$	66KHz Typ.	75% Typ.
TRG10R180	18V	550mA	0 A	1%	$\pm 2\%$	$\pm 1\%$	$\pm 2\%$	66KHz Typ.	75% Typ.
TRG10R240	24V	400mA	0 A	1%	$\pm 2\%$	$\pm 1\%$	$\pm 2\%$	66KHz Typ.	75% Typ.

### Specifications

#### INPUT SPECIFICATIONS:

Voltage .....90 ~ 264Vac  
 Frequency .....47 to 63Hz  
 Input Current .....0.4A max.  
 Inrush Current.....40A max. @240Vac  
 Isolation .....Input to output =4,242VDC  
 Leakage Current.....0.25mA max

#### OUTPUT SPECIFICATIONS:

Holdup Time .....10mS typ. @115Vac  
 Short Circuit Protection .....Continuous (Auto Recovery)  
 Over Current Protection .....Constant Current type  
 Over Voltage Protection.....Yes

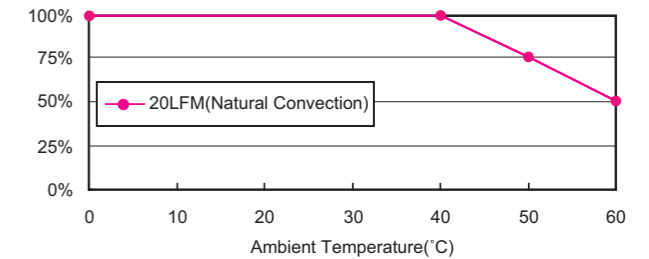
#### ENVIRONMENTAL CHARACTERISTICS:

Operating Temperature .....0 ~ 40°C  
 Storage Temperature .....-20 ~ 85°C  
 Cooling.....Natural Convection

#### MECHANICAL CHARACTERISTICS:

Dimensions .....72.00 x 46.00 x 35.00mm(2.835 x 1.811 x 1.378 Inches)  
 Weight .....130g (0.29 Pounds)

### TRG10R Series Derating Curve



#### NOTE:

1. Voltage setpoint at 60% full load.
2. Add a 0.1 $\mu$ F ceramic capacitor and a 10 $\mu$ F E.L. capacitor to output for Ripple & Noise measurement @20MHz BW.
3. Line regulation measured from 100Vac to 240Vac, full load.
4. Load regulation measured from 60% to full load and from 60% to 20% load (60% +/- 40% load)

### Mechanical Specification

All Dimensions In Inches(mm)  
 Tolerance Inches: x.xxx=  $\pm 0.02$   
 Millimeters: x.xx=  $\pm 0.5$

