

Features

- ◆ **Smallest 15W converter**
Ultra compact size: 27.9 x 23.9 x 8.5mm
- ◆ **Cost efficient open frame design with industry standard pin-out**
- ◆ **Surface-mount (SM) and through-hole version**
- ◆ **I/O isolation voltage 2250V, rated for basic insulation**
- ◆ **Extended operating temperature range -40°C to +85°C**
- ◆ **Input filter meets EN55022, Class A**
- ◆ **Under voltage lockout**
- ◆ **Remote On/Off**
- ◆ **Lead free design, RoHS compliant**
- ◆ **3-years product warranty**



The TON-15 series is a new generation of high performance 15W dc-dc converters with wide input voltage range and precisely regulated output voltage. The ultra compact open frame design with industry standard pin-out provides the designer now a 50% smaller, cost efficient alternative to existing 10 to 15W converters in the market. Built-in filters for both input and output minimize the need for external filtering.

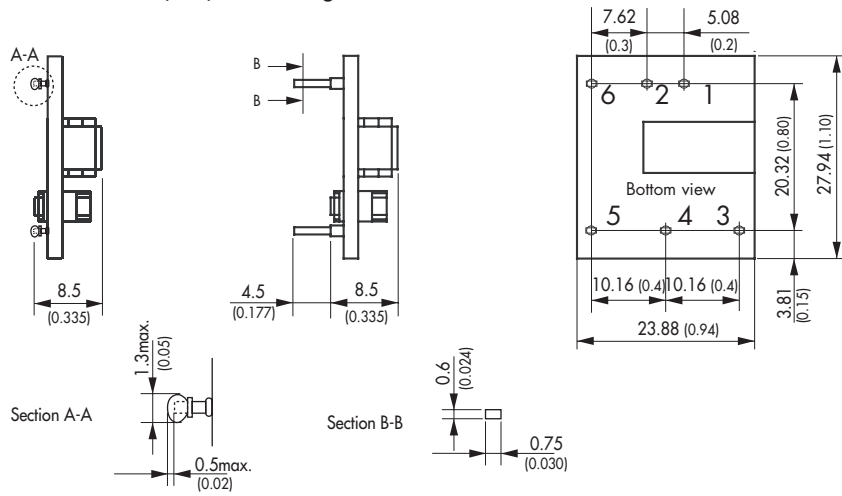
Further features include remote On/Off, output voltage trimming, over voltage protection, under voltage lockout and short circuit protection. Typical applications are distributed power systems, instrumentation and industrial electronics, everywhere where space on the PCB is a critical factor.

Models

Order code	Input voltage range	Output voltage	Output current max.	Efficiency typ.
TON 15-2410	18 – 36 VDC (nominal 24 VDC)	3.3 VDC	3'500 mA	84 %
TON 15-2411		5.0 VDC	3'000 mA	84 %
TON 15-2412		12 VDC	1'250 mA	85 %
TON 15-2413		15 VDC	1'000 mA	86 %
TON 15-4810	36 – 75 VDC (nominal 48 VDC)	3.3 VDC	3'500 mA	85 %
TON 15-4811		5.0 VDC	3'000 mA	86 %
TON 15-4812		12 VDC	1'250 mA	87 %
TON 15-4813		15 VDC	1'000 mA	88 %

Add suffix **SM** for surface mount version

SMD Version (SM) Trough Hole Version



All specifications valid at nominal input voltage, full load and +25°C after warm-up time unless otherwise stated.

General Specifications

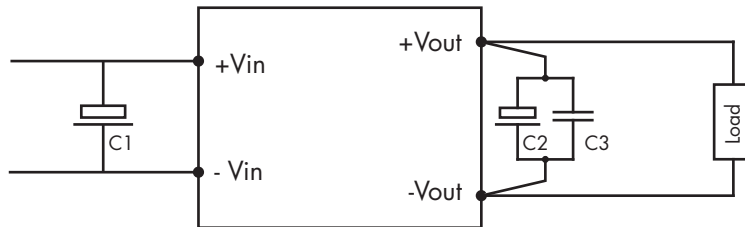
Vibration	10-55Hz, 2G, 30 minutes along X,Y,Z
Safety standards	UL 60950-1, EN 60950-1, IEC 60950-1
Safety approvals	UL/cUL File E188913

Physical Specifications

Weight	10.5g (0.36 oz)
Soldering profile	<ul style="list-style-type: none"> - Trough Hole Version - SMD Version
	max. 265°C / 10 sec. (wave soldering) peak temp. 245°C for 10 sec. max., 217°C for 90 sec. max. (Convection reflow solder process is recommended)

Note 1

Recommended circuit to reduce conducted noise and output ripple & noise:

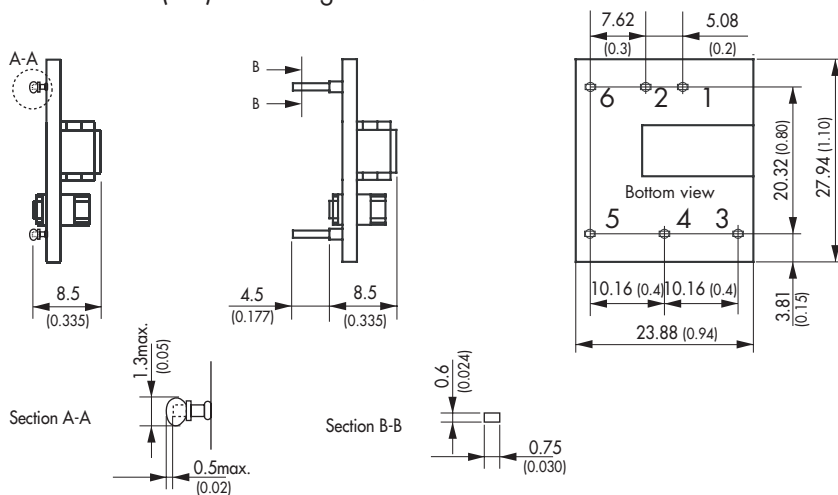


C1: 33µF low ESR electrolytic capacitor
 C2: 10µF low ESR electrolytic capacitor
 C3: 1µ film capacitor

Application notes can be downloaded under:
www.tracopower.com/products/ton15_application.pdf

Outline Dimensions

SMD Version (SM) Trough Hole Version



Pin-Out	
Pin	Single
1	+Vin (Vcc)
2	-Vin (GND)
3	+Vout
4	Trim
5	-Vout
6	Remote On/Off

Dimensions in [mm], () = Inch
 Tolerances ±0.35 (±0.014)

Specifications can be changed any time without notice