

25 WATTS

SRP-25 SERIES AC-DC

FEATURES:

- RoHS Compliant
- Universal 85-264 VAC Input
- Advanced SMT Design
- Compact 2.25" x 4.00" x .96" Size
- 2 Year Warranty
- Fits 1U Applications
- One to Three Outputs
- EN 60950-1 ITE Certification
- EN 60601-1 Medical Certification
- Class B Emissions per EN 55011/22
- EMC to EN 61000-6-2 & EN 60601-1-2
- Optional Chassis and Cover








OPEN FRAME



CHASSIS/COVER

SAFETY SPECIFICATIONS

General	Protection Class: I Overvoltage Category: II Pollution Degree: 2
 Underwriters Laboratories File E137708/E140259	UL 60950-1 2 nd Edition UL 60601-1 1 st Edition
	CB Certificate per IEC 60950-1:2005 2 nd Edition +A1:2009 including all National Deviations CB Certificate per IEC 60601-1 (1988) 2 nd Edition A1, A2
 UL Recognition Mark for Canada File E137708/E140259	CAN/CSA-C22.2 No. 60950-1-07, 2 nd Edition CAN/CSA-C22.2 No. 601-1-M90 with updates 1 and 2
	EN 60950-1/A1:2010 EN 60601-1/A2:1995
	Low Voltage Directive

MODEL LISTING

MODEL NO.	OUTPUT 1	OUTPUT 2	OUTPUT 3
SRP-25-3001	+5V/3A	+12V/1.5A	-12V/0.5A
SRP-25-3002	+5V/3A	+15V/1.5A	-15V/0.5A
SRP-25-3003	3.3V/2.5A	6V/2A	5V/1A
SRP-25-2001	+5V/3A	+24V/1A	
SRP-25-2002	+5V/3A	+12V/1.5A	
SRP-25-2003	+5V/3A	-5V/2A	
SRP-25-2004	+12V/1.5A	-12V/1.5A	
SRP-25-2005	+15V/1.5A	-15V/1.5A	
SRP-25-1001	3.3V/6A		
SRP-25-1002	5V/5A		
SRP-25-1003	12V/2.08A		
SRP-25-1004	15V/1.67A		
SRP-25-1005	24V/1.04A		
SRP-25-1006	48V/0.52A		

NOTES

Consult factory for alternate output configurations.
Consult factory for positive, negative or floating output 2 or 3.
Refer to Applications Information for complete output power ratings.
All specifications are maximum at 25° C, 25W unless otherwise stated, may vary by model and are subject to change without notice.
Specify optional chassis and cover when ordering.

OUTPUT SPECIFICATIONS

Total Output Power	25W (20W, 1001)	
Output Voltage Centering	Output 1:	± 0.25% (All outputs at 50% load)
	Output 2:	± 5.0%
	Output 3:	± 2.0%
Output Voltage Adjust Range	Output 1:	95 - 105%
Load Regulation	Output 1:	0.5% (0-100% load change)
	Output 2:	5.0% (10-100% load change)
	Output 2: (2003)	6.0% (30-100% load change)
	Output 3:	1.0% (0-100% load change)
Source Regulation	Outputs 1 - 3:	0.5%
Cross Regulation	Output 2:	5.0% (Output 1 load varied 50-100%)
	Output 3:	2.0%
Output Noise	Outputs 1-3	1%
Turn on Overshoot	None	
Transient Response	Outputs 1 - 3	
Voltage Deviation	5.0%	
Recovery Time	1 mS	
Load Change	50% to 100%	
Output Overvoltage Protection (optional)	Output 1:	110% to 150%
Output Overcurrent Protection	Output 3:	110% Min.
Output Overpower Protection	Outputs 1 & 2: 110% Min. Outputs cycle on/off, auto recovery	
Hold Up Time	10 mS min., 25W Output, 120V Input	
Start Up Time	1 Second	

INPUT SPECIFICATIONS

Source Voltage	85 - 264 Volts AC
Frequency Range	47 - 63 Hz
Source Current	
True RMS	.8A at 85V Input
Peak Inrush	30 A
Efficiency	.66 - .72 (Varies by model)

ENVIRONMENTAL SPECIFICATIONS

AMBIENT OPERATING	0° C TO + 70° C
Temperature Range	Derating: See Power Rating Chart
Ambient Storage Temp. Range	- 40° C to + 85° C
Temperature Coefficient	Outputs 1 - 3: 0.02%/°C

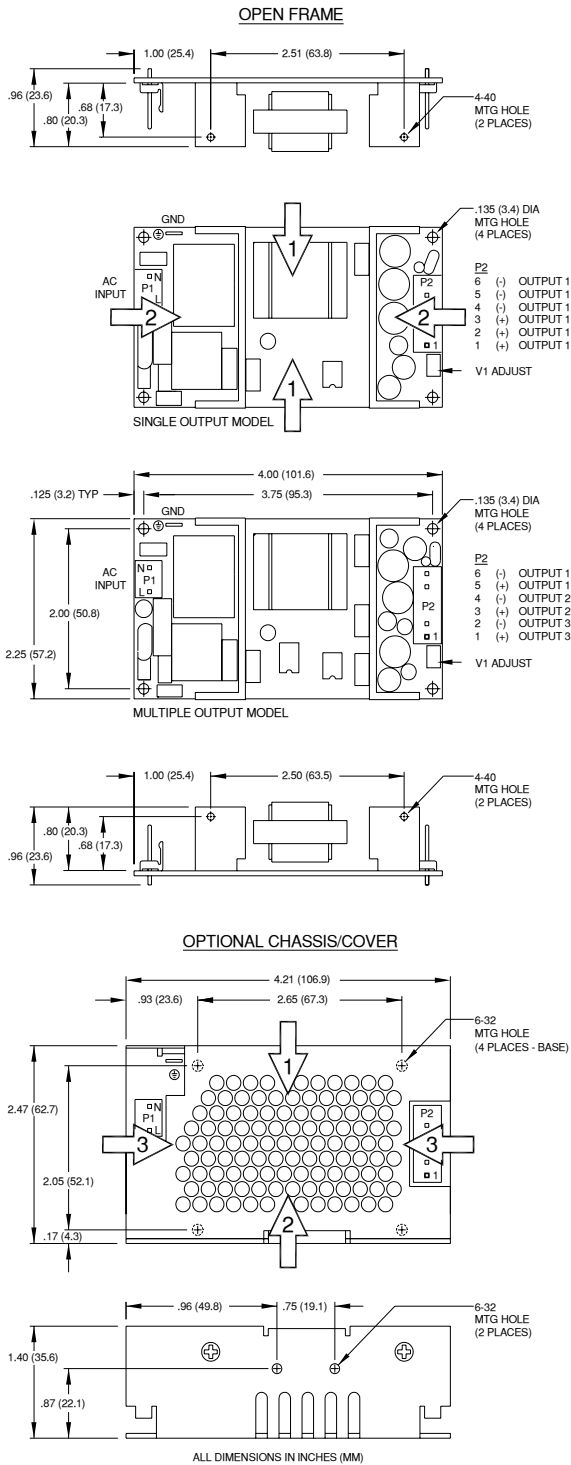
GENERAL SPECIFICATIONS

Dielectric Strength ⁽⁸⁾	
Reinforced Insulation	5656 VDC, Primary to Secondary, 1 Sec.
Basic Insulation	2121 VDC, Primary to Ground, 1 Sec.
Operational Insulation	707 VDC, Secondary to Ground, 1 Sec.
Leakage Current	<300uA Earth Leakage Current
Mean-Time Between Failures	100,000 Hours min., MIL-HDBK-217F, 25° C, GB
Weight	0.30 Lbs. Open Frame 0.62 Lbs. Chassis and Cover

ELECTROMAGNETIC COMPATIBILITY SPECIFICATIONS

Electrostatic Discharge	EN 61000-4-2	+/- 8kV Contact Discharge +/- 8kV Air Discharge
Radiated Electromagnetic Field	EN 61000-4-3	80MHz-2.5GHz, 10/m, 80% AM
EFT/Bursts	EN 61000-4-4	+/- 2 kV
Surges	EN 61000-4-5	+/- 1kV Differential Mode +/- 2 kV Common Mode
Conducted Immunity	EN 61000-4-6	.15 to 80MHz, 3V, 80% AM
Voltage Dips and Interruptions	EN 61000-4-11	30% Reduction, 500ms 95% Reduction, 10ms 60% Reduction, 1s (Criteria B) 95% Reductions, 5000ms
Radiated Emissions	EN 55011/22	Class B
Conducted Emissions	EN 55011/22	Class B

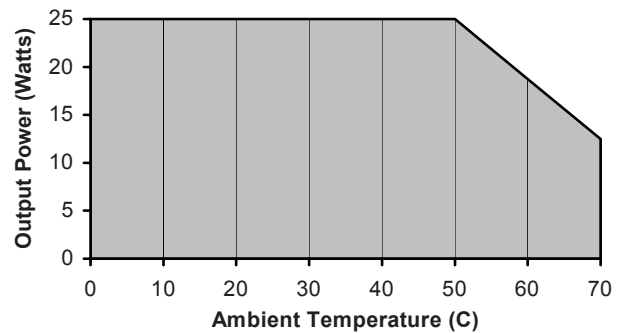
SRP-25 SERIES MECHANICAL SPECIFICATIONS



APPLICATIONS INFORMATION

- Each output can deliver its rated current but total output power must not exceed 25 watts.
- Semiconductor case temperatures must not exceed 110°C.
- Sufficient area must be provided around convection cooled power supplies to allow natural movement of air to develop.
- This product is intended for use as a professionally installed component within information technology and medical equipment.
- A minimum load of 10% is required on output one to ensure proper regulation of remaining outputs.
- This product includes one in the input circuit. In consideration of Clause 57.6 of UL 60601-1, a second fuse may be required in the end product.
- Peak to peak output ripple and noise is measured directly at the output terminals of the power supply, without the use of the probe ground lead or retractable tip, 20 MHz bandwidth. This product includes only one fuse in the input circuit. In consideration of Clause 57.6 of UL 60601-1, a second fuse may be required in the end product.
- This product was type tested and safely certified using the dielectric strength test voltages listed in Table V of UL 60601-1. In consideration of Clause 20.4g, care must be taken to insure the voltage applied to a reinforced insulation does not overstress basic insulation. Secondary to ground capacitors may need to be removed prior to performing a dielectric strength type test on the end product. It is highly recommended that the DC test voltages listed in DVB.1, Annex DVB are not exceeded during a production-line dielectric strength test of the assembled end product. Please consult factory for further information.
- This power supply has been safely approved and final tested using a DC dielectric strength test. Please consult factory before performing an AC dielectric strength test.
- Maximum screw penetration into bottom chassis mounting holes is .100 inches.
- Maximum screw penetration into side chassis mounting holes is .250 inches.
- To meet emissions specifications, all four mounting hole pads must be electrically connected to a common metal chassis. Chassis/cover option recommended.

MAXIMUM OUTPUT POWER VS. AMBIENT TEMPERATURE



CONNECTOR SPECIFICATIONS

P1	AC Input	.156 friction lock header mates with Molex 09-50-3031 or equivalent crimp terminal housing with Molex 08-50-0189 or equivalent crimp terminal.
P2	DC Output	.156 friction lock header mates with Molex 09-50-3061 or equivalent crimp terminal housing with Molex 08-50-0189 or equivalent crimp terminal.
G	Ground	.187 quick disconnect terminal.

RECOMMENDED AIR FLOW DIRECTION

1 – Optimum 2 – Good 3 – Fair