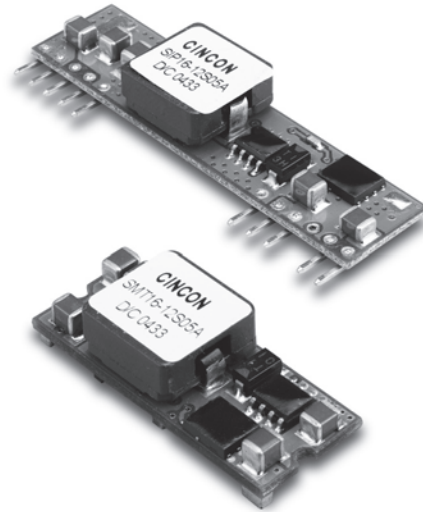


SIPSMT16-12

S E R I E S

16 AMP POL CONVERTERS



Features

- Non-Isolated POL Converter
- SIP / SMT Package
- Output Current 16AMP
- Input Voltage Range 9-14VDC
- Output Voltage Range 0.75-5VDC
- 300KHz Switching Frequency
- High Efficiency to 94%
- Over Temperature Protection
- Continuous Short Circuit Protection
- Remote On/Off Control
- UL/c-UL 60950 Certified

MODEL NUMBER	INPUT VOLTAGE	OUTPUT VOLTAGE	OUTPUT CURRENT	INPUT CURRENT		% EFF.
				NO LOAD	FULL LOAD	
SIP 16-12S05A	9.0-14VDC	0.75VDC	16A	40mA	1299mA	77
	9.0-14VDC	1.2VDC	16A	50mA	1928mA	83
	9.0-14VDC	1.5VDC	16A	50mA	2326mA	86
	9.0-14VDC	1.8VDC	16A	60mA	2727mA	88
SMT16-12S05A	9.0-14VDC	2.0VDC	16A	60mA	2996mA	89
	9.0-14VDC	2.5VDC	16A	65mA	3704mA	90
	9.0-14VDC	3.3VDC	16A	75mA	4783mA	92
	9.0-14VDC	5.0VDC	16A	75mA	7092mA	94

NOTE: 1. Nominal Input Voltage 12 VDC

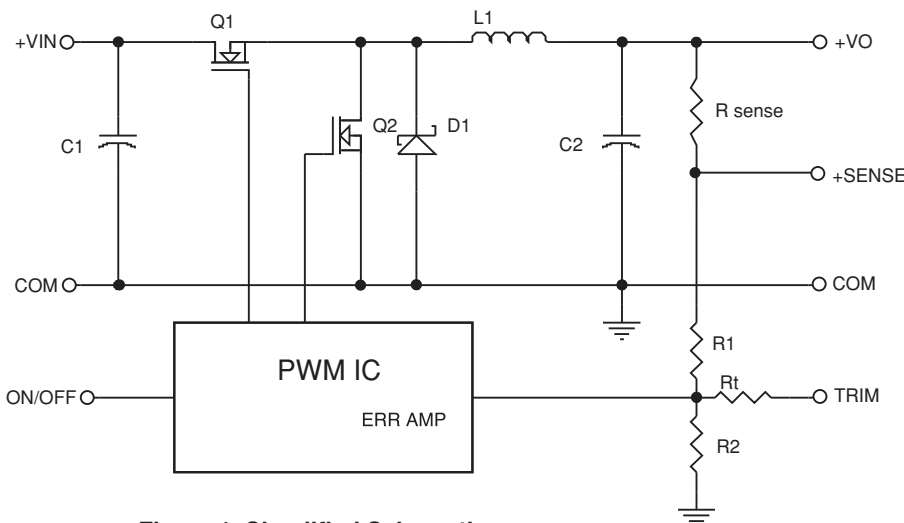


Figure 1. Simplified Schematic

Vo, set (V)	Rtrim (KΩ)
0.75	Open
1.2	22.33
1.5	13.0
1.8	9.0
2.0	7.4
2.5	5.0
3.3	3.12
5.0	1.47

Table 1. External Resistor Values for programming output voltage

