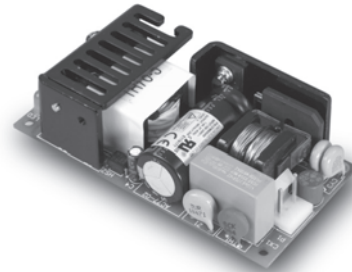
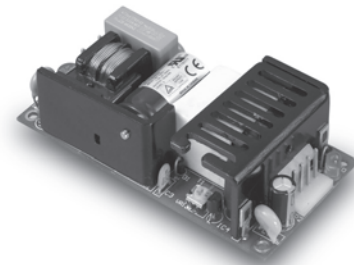


CFM40/60

S E R I E S

40/60 WATT OPEN FRAME AC-DC MODULES



Features

- Universal Input Range 90-264VAC
- Efficiency to 87%
- 2" x 4" Size
- Meets EN55022 Class B and CISPR/FCC Class B, Conducted
- Industry Standard Pin Out
- Continuous Short Circuit Protection

CFM40 Series

MODEL	OUTPUT VOLTAGE	MAX. LOAD	MIN. LOAD	RIPPLE & NOISE	VOLTAGE ACCURACY	LINE REGULATION	LOAD REGULATION	%EFF.
CFM40S033	3.3 V	6A	0A	50mV	± 1%	± 0.5%	± 1%	70% Typ.
CFM40S050	5 V	6A	0A	1%	± 1%	± 0.5%	± 1%	76% Typ.
CFM40S090	9 V	4.45A	0A	1%	± 1%	± 0.5%	± 1%	84% Typ.
CFM40S120	12 V	3.34A	0A	1%	± 1%	± 0.5%	± 1%	85% Typ.
CFM40S150	15 V	2.67A	0A	1%	± 1%	± 0.5%	± 1%	85% Typ.
CFM40S240	24 V	1.67A	0A	1%	± 1%	± 0.5%	± 1%	85% Typ.
CFM40S300	30 V	1.33A	0A	1%	± 1%	± 0.5%	± 1%	86% Typ.
CFM40S360	36 V	1.11A	0A	1%	± 1%	± 0.5%	± 1%	87% Typ.
CFM40S480	48 V	0.834A	0A	1%	± 1%	± 0.5%	± 1%	87% Typ.

CFM60 Series

MODEL	OUTPUT VOLTAGE	MAX. LOAD	MIN. LOAD	RIPPLE & NOISE	VOLTAGE ACCURACY	LINE REGULATION	LOAD REGULATION	%EFF.
CFM60S033	3.3 V	8A	0A	50mV	± 1%	± 0.5%	± 1%	72% Typ.
CFM60S050	5 V	8A	0A	1%	± 1%	± 0.5%	± 1%	77% Typ.
CFM60S090	9 V	6.67A	0A	1%	± 1%	± 0.5%	± 1%	84% Typ.
CFM60S120	12 V	5A	0A	1%	± 1%	± 0.5%	± 1%	85% Typ.
CFM60S150	15 V	4A	0A	1%	± 1%	± 0.5%	± 1%	86% Typ.
CFM60S240	24 V	2.5A	0A	1%	± 1%	± 0.5%	± 1%	86% Typ.
CFM60S300	30 V	2A	0A	1%	± 1%	± 0.5%	± 1%	86% Typ.
CFM60S360	36 V	1.67A	0A	1%	± 1%	± 0.5%	± 1%	88% Typ.
CFM60S480	48 V	1.25A	0A	1%	± 1%	± 0.5%	± 1%	88% Typ.

