

LED Driver

High Power Constant Current LED Driver

Total Power	26 Watts max.
Input Voltages	10 ~ 40VDC
Number of Outputs	One

SPECIAL FEATURES

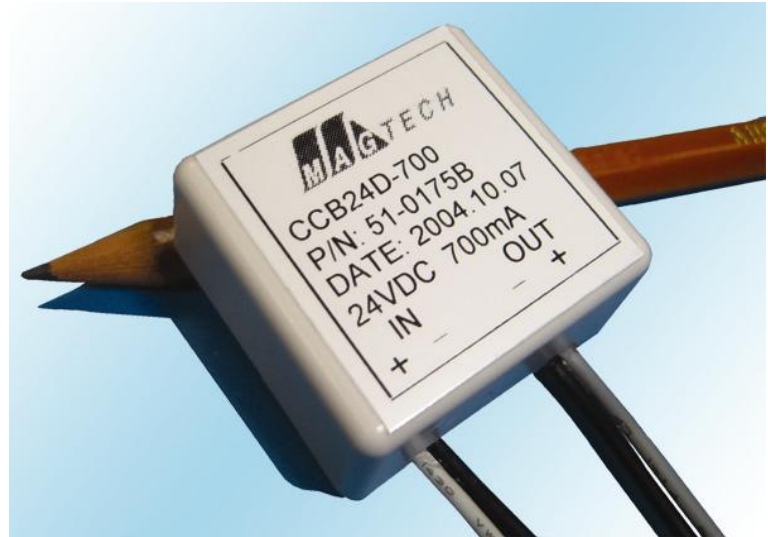
- Compact size that maximize design flexibility.
- 1.22" x 1.26" x 0.59" (LxWxH)
- Suitable for wet, damp and dry locations
- High efficiency reduce total power consumption
- Tight regulated constant current output to maximize the LED performance
- Wide range of input voltage from 10 ~ 40VDC
- Wide selection of pre-adjusted C/C outputs

ENVIRONMENTAL

Operating temperature:	-40 to +60 °C
Storage temperature:	-40 to +80 °C
Humidity (Non-Condensing):	5% to 95%
Cooling:	Convection
Vibration Frequency:	5 to 50 Hz
MTBF:	>100,000 Hours at full load and 25°C ambient conditions (MIL-217F)

Product Specifications

ANZ#: Z105c, January 16, 2006



Picture shown above is not to scale

MODEL : CC4036Dy-zzzz (CC4036DP-350,CC4036DP-700,CC4036DP-1000)

DC Input Voltage	DC output working Voltage	Output (Note1) Constant Current	Watts Max.	DC Input Voltage	DC output working Voltage	Output (Note1) Constant Current	Watts Max.
40Vdc	2~36V	300~350mA	13W	28Vdc	2~24V	300~1000mA	24W
40Vdc	2~32V	300~700mA	22W	24Vdc	2~22V	300~1000mA	22W
36Vdc	2~30V	300~700mA	21W	15Vdc	2~13V	300~1000mA	13W
32Vdc	2~28V	300~700mA	20W	12Vdc	2~11V	300~1000mA	11W
30Vdc	2~26V	300~1000mA	26W	10Vdc	2~ 9V	300~1000mA	9W

Note1 : Output Constant Current can be adjusted at factory before shipping.

MODEL INFORMATION :

CC4036xye-zzzz (Single DC Output)

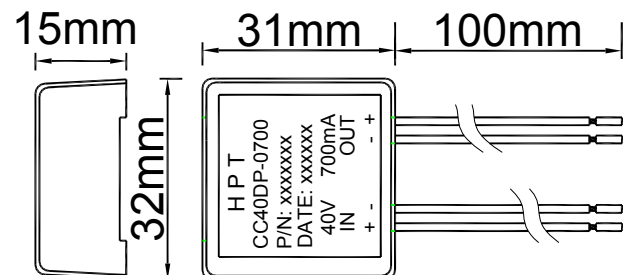
x = D- DC input .

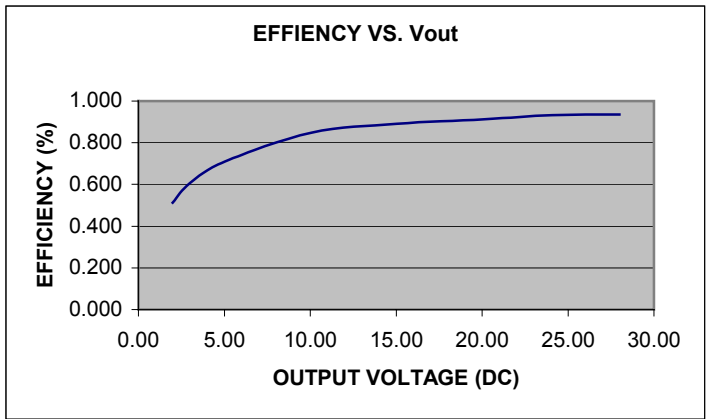
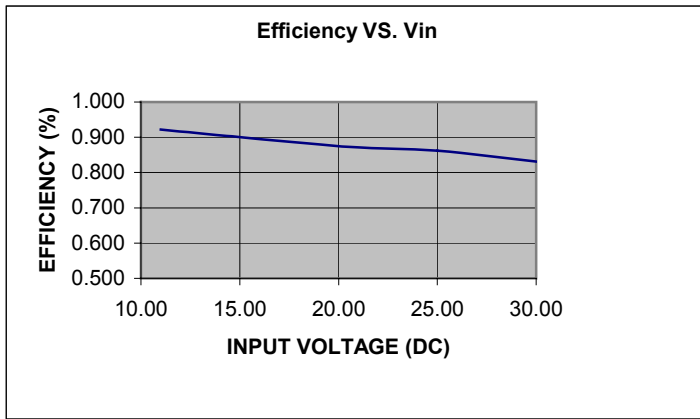
y = P- plastic housing (31x32x15mm), E- Not Defined

zzzz = 0350- 350mA , 0500- 500mA , 0700- 700mA , 1000- 1000mA Constant Current Output.

MECHANICAL DRAWING:

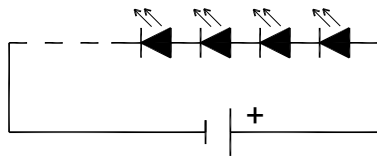
P-Plastic Housing





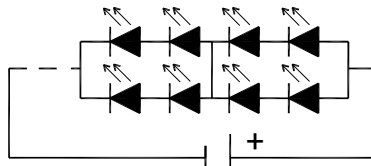
APPLICATION EXAMPLE:

1W LED - 9 pcs



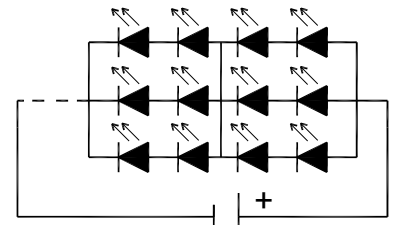
36Vdc/ 350mA

3W LED - 8 pcs
1W LED - 16 pcs

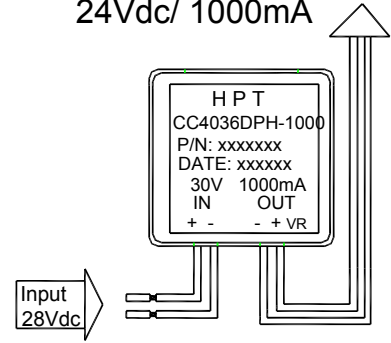
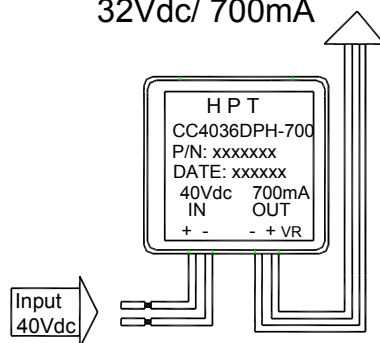
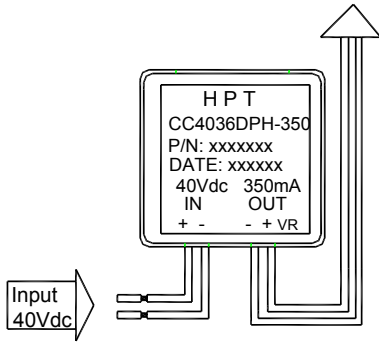


32Vdc/ 700mA

5W LED - 6 pcs
1W LED - 18 pcs



24Vdc/ 1000mA



Distributed by: Power Sources Unlimited, Inc., Wrentham, MA Tel: 508-384-1419 | E-mail: sales@psui.com | Website: www.psui.com